
Acute Stress Disorder 2008 Survey Results

presented at
Society Of Trauma Nurses Conference
Pediatric Special Interest Group
April 2009

Focus of survey

- A descriptive survey was distributed to members of STN listserv to determine current practice related to the assessment for acute traumatic stress and interventions that are provided for patients experiencing, or at risk for, trauma stress reactions.

Survey Results

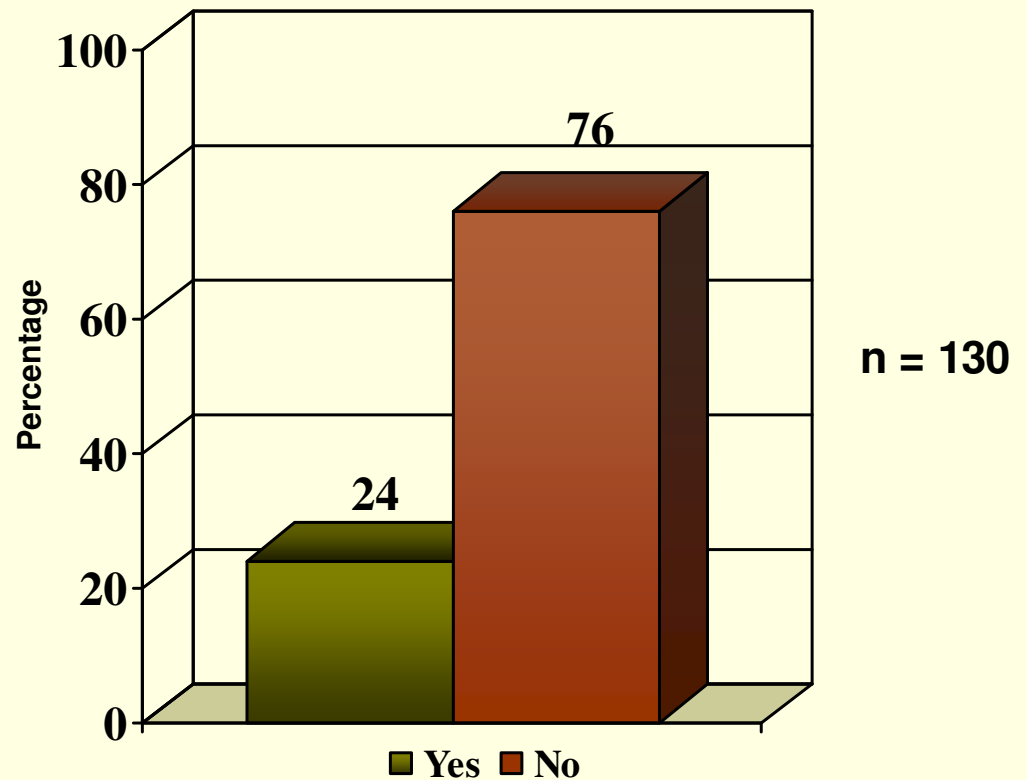
- Total Surveys completed = 133
- 63% of those responding say their hospital is verified by ACS
- All levels of verification/designation were represented
- 59% of those responding indicated that their hospitals were combined pediatric and adult facilities

Survey Results: Identification of patients with Acute Stress Disorder (ASD)

■ 24% (31/130) screen for ASD

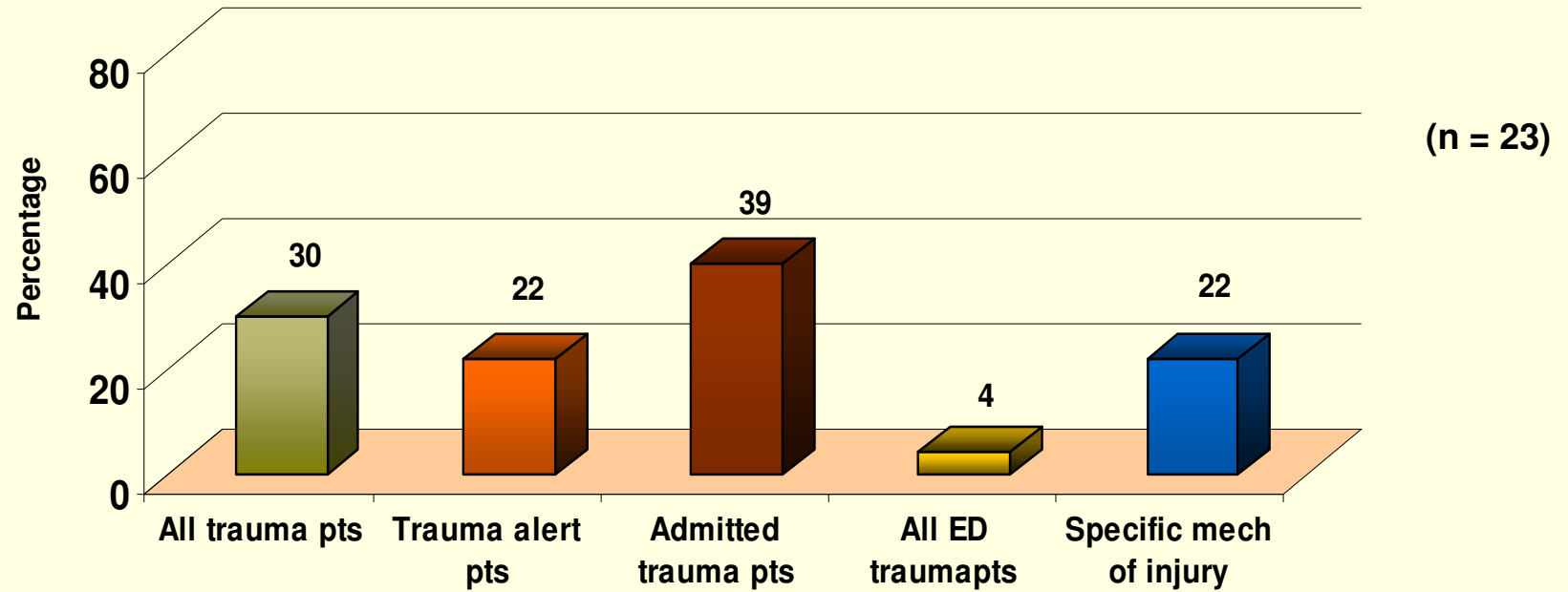
■ 76%(99/130) currently do not screen for ASD

Question 6: Does your facility screen for acute stress disorder (ASD)?



Populations screened

Question 8: What patient populations do you screen/what criteria are used?

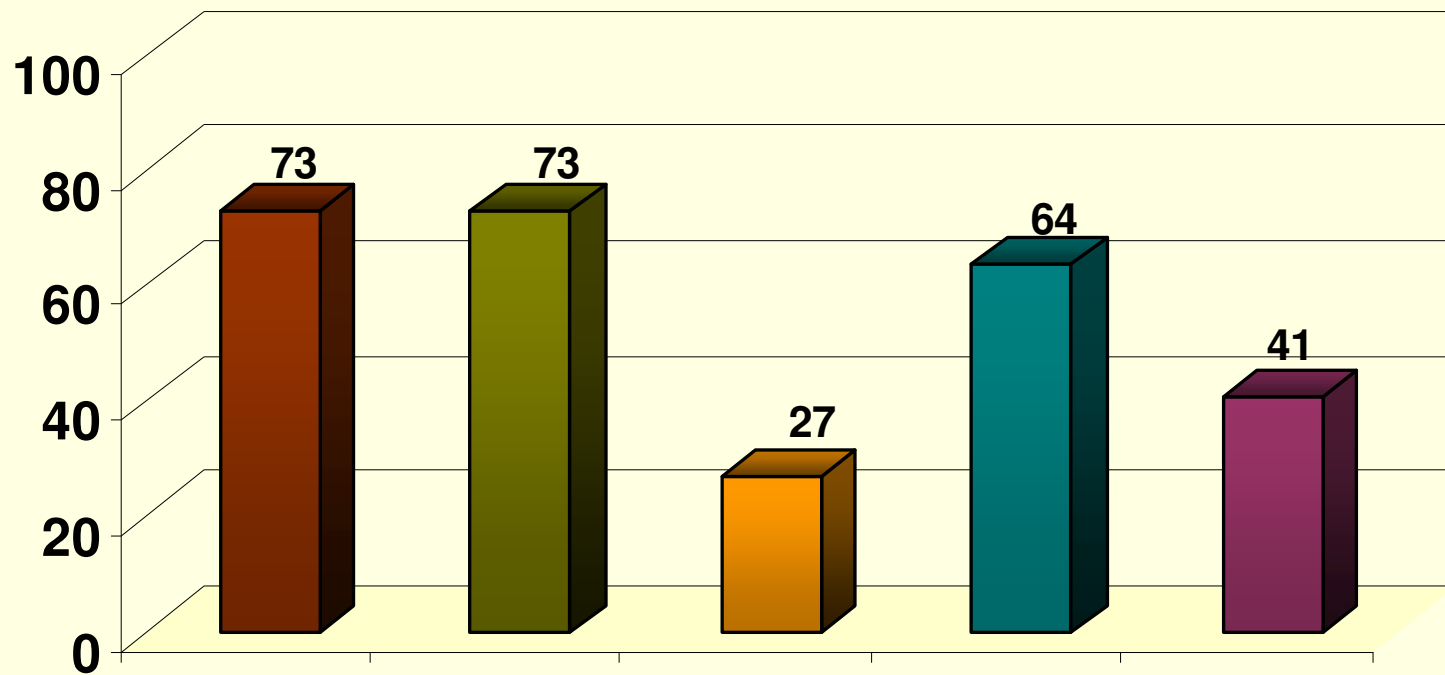


Who, Where, When....

For those indicating that they do screen for ASD:

- 67% Utilized Social Workers to screen patients
- 86% Screened patients in med/surg trauma unit
- 91% Screened patients after admission to inpatient unit

Treatment of Patients with Diagnosis of ASD



Follow up

For those that screen for ASD:

- 43% Follow up with ASD-diagnosed patients after discharge
- 9% Maintain list of patients who were identified with ASD

Survey Results

- Among hospitals there are differing:
 - Criteria for screening
 - Screening tools
 - Screening staff
 - Screening locations
 - Patient populations screened
 - Interventions provided
 - Follow up provided

Survey Comments

- Need template/screening tool/standardized form
- Identify which discipline should do the screening/who would initiate (Nurse, APN, Social Worker, Psych)
- Identify sources for reimbursement and follow-up treatment programs
- Connect to SBIRT?

Some recommendations...

- Standardize screening tools (identify tools being used currently)
- Make screening process systematic at all levels
- Provide education about acute stress disorder
- Raise awareness